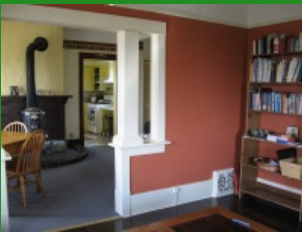


# 97.5 acres Keho Lake view - Nobleford, AB

ID: 1553

Nobleford, AB



**NOBLEFORD: 97.5 acre hobby farm. Comes with a large classic two storey, 2283 sq.ft. home with nice view of Keho Lake. Home has 4 bedrooms, 2 bathrooms, renovated bathroom, new water filtering system, attached double garage. Outside: new corrals, 2 livestock barns, approx. 85 acre**

**\$449,000.00**

1817 20th Avenue Box 879  
Coaldale, AB  
<http://canadafarmandranch.com>

frans.vandestroet@ssre.ca  
Office: 403.345.5100  
Cell: 403.380.7633

